

Sesame street backpack, Sewing Instructions.

By Mikael Svensson

MYSEWNET™ GOLD OR PLATINUM LEVEL Required



Here is everything you need to complete this project.

To make this backpack you need to start by making all the **stitch-outs required**.

Find the collection [Here](#)

Instruction on how to stitch them out [Here](#)

You need the following finished parts:

- 1 backpack front
- 1 backpack back
- 1 zipper panel
- 2 side panels
- 1 strap holder

You also need:

- Fabric for the padded straps 12x4" (30x10cm)
- Foam batting for padded straps 2 pieces, 1½" x 10" (4x25cm)
- Web strapping for handle, straps, and connectors, 1½ yard (145cm)
- 2 triglide buckles

Project Instructions:

Making the padded straps

1. Fold the piece for the padded strap right side together, sew together with a ¼" (6mm) seam allowance, repeat with the other padded strap fabric.



2. Press the seam allowances open and turn right side out.



3. Insert the foam batting. It could be a little tricky to get it inside. The batting should be centered in the tube, leaving about 1" (2,5cm) on the ends without batting. See image below:



4. Make a topstitch line ¾" (2cm) in from each side of the strap. This means there will be two lines in the middle 1/8" (3mm) apart



5. Fold the corners of one end of the strap towards the back (the side with the seam). The folded corners should make a triangle. Pin in place. And repeat with the other strap.



6. Tak out all the webbing pieces.



7. Singe all the edges with a lighter to prevent fraying. Be careful doing this.



8. Put one end of the small webbing parts into the triglide buckle and fold it together. Use a pin or clip to hold it together, make two.



9. Insert the folded end of the padded strap into the webbing and Tri buckle part we did in the previous step. Make sure it covers any raw edges. The front of the triglide should be facing up on the right side of the padded strap, see image below for more clarity.



10. Sew the webbing in place. Make several rows of stitching to make it durable.



11. Put the handle piece of webbing in position on the placement for the strap holder on the back piece. Use masking tape to hold it in place.



12. Place the padded straps in place, the wrong side should be facing up. The inner edges of the straps should be almost touching the center quilt line. Secure with tape



13. Pin the strap holder in place, covering all raw edges.



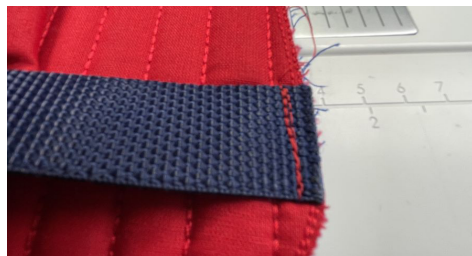
14. Sew the strap holder in place with a stitch line “in the ditch,” just inside the satin edge. Make two rows of stitching



15. Pin the carrying straps in position on the back. They should be placed about 1” (2,5cm) above the bottom line, just where the curve ends.



16. Stitch the strap in place just inside the edge. This will increase the strength of the strap. It also makes the assembly of the backpack easier.



17. Put the strap end into the triglide buckle as described in the images below.

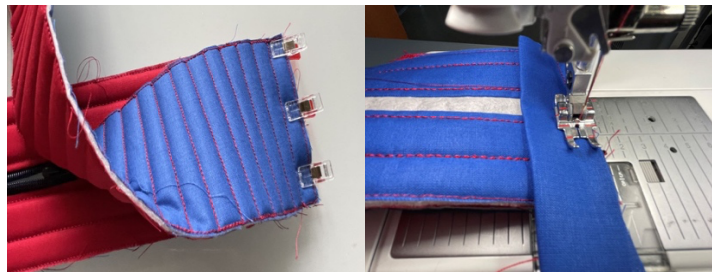


18. The back of the backpack is now finished. It should look like this:



Sewing the side panels together

19. Put one side panel and the zipper panel right sides together at the short sides. Pin in place and sew together with a ¼" (7mm) seam allowance. Bind the edges with the binding strip. Sew it double folded at one side and fold it over, topstitch in place. Repeat on the other side with the remaining side panel.



20. Tear away the stabilizer in the zipper opening.



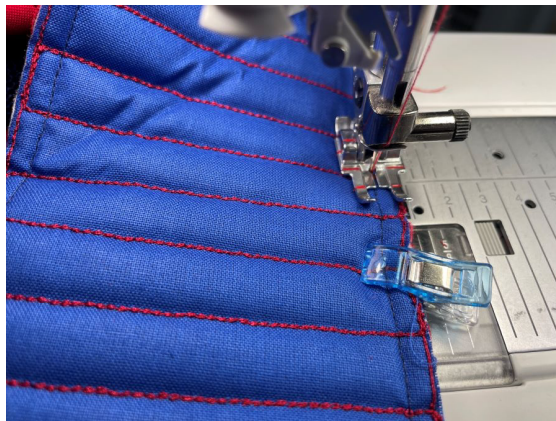
21. Sew a ¼" (1cm) stitch line on both sides of the completed side panel/zipper panel. This is to hold the layers together and a guide for making cuts in the seam allowance at the rounded edges of the backpack.



22. Pin the side panels to the back part of the backpack. Make small cuts in the seam allowance where needed at the rounded edges. Start at the top of the backpack. Stop at the center bottom,



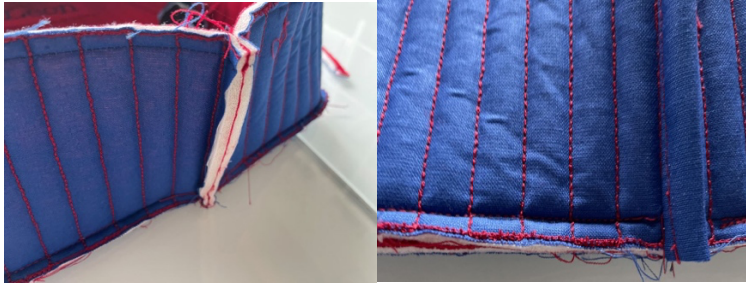
23. Sew in place, following the stitch line we made earlier. Do not sew all the way to the center bottom, stop about 2" (5cm) before the center to make the joining of the side panels easier.



24. Join the side panels at the center bottom.



25. Cut away excess fabric, leaving about ¼" (7mm). Bind the edges as you did earlier. Finish sewing the side panel to the backpack.



26. Bind the edges of the seam you just made. Repeat with the front part of the backpack. It may be necessary to make some small tucks in the rounded edges, but that is ok.

